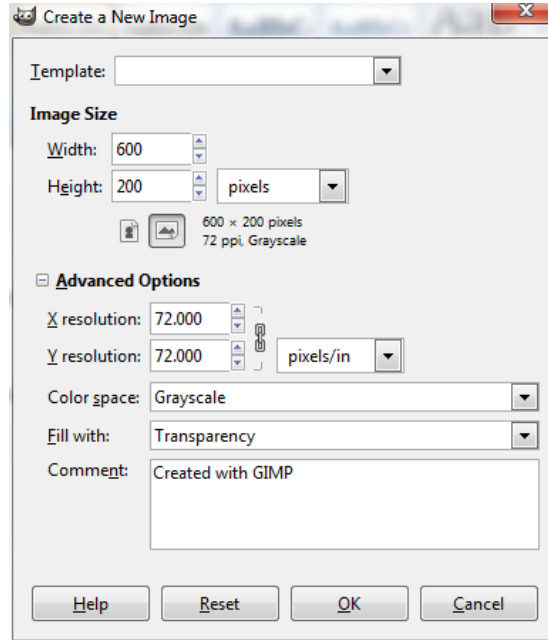


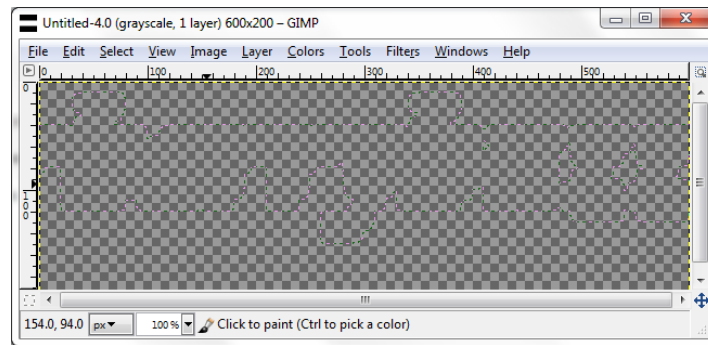
# How to create a custom brush in GIMP for easy watermarking

Open a new document (file, new)

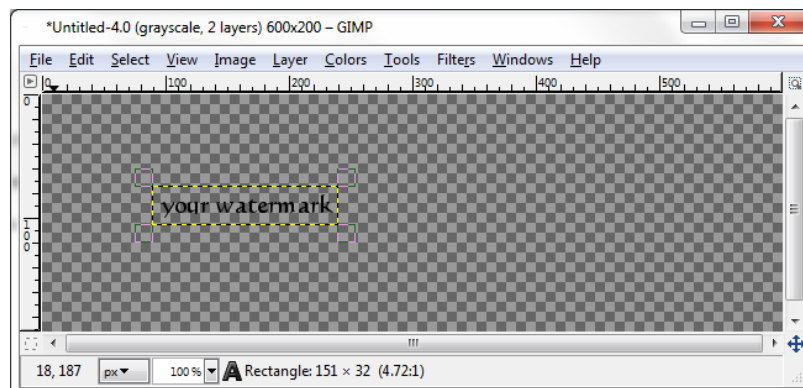
This opens a box. Set your pixels to 600 and 200 and select landscape for orientation. Set Color space to Grayscale and fill with Transparency. Then click OK.



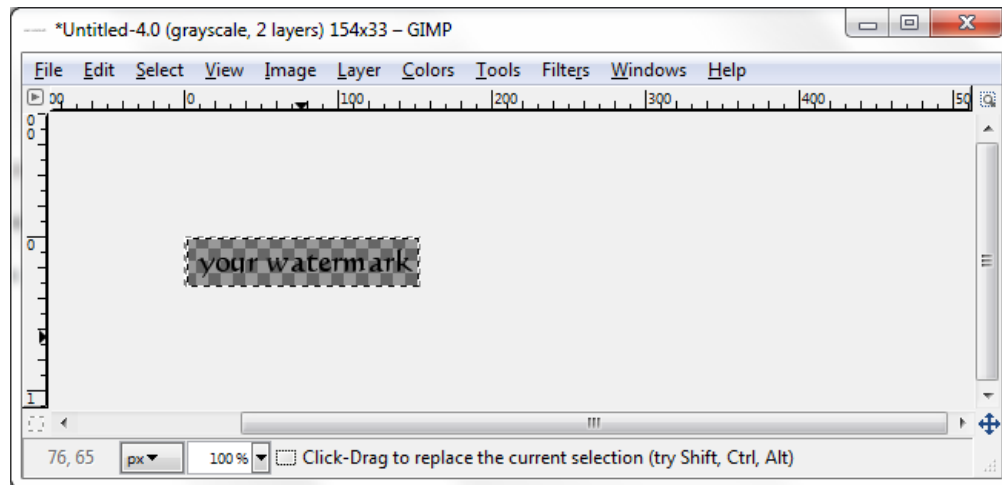
This is what you get



Select the text function from your tools and type in your text for watermarking

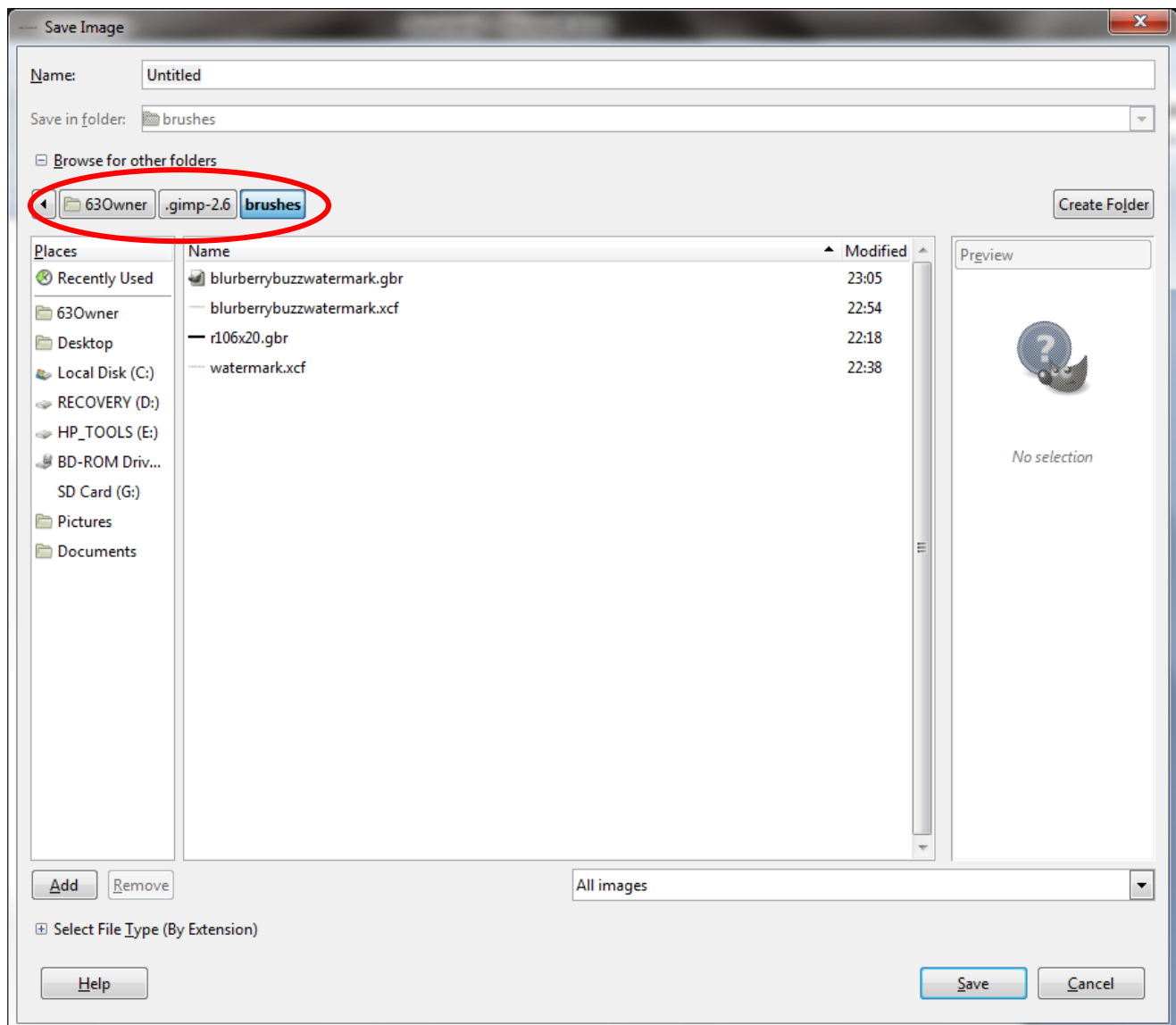


Use the rectangle selector and highlight the text, then crop the image to the selection.

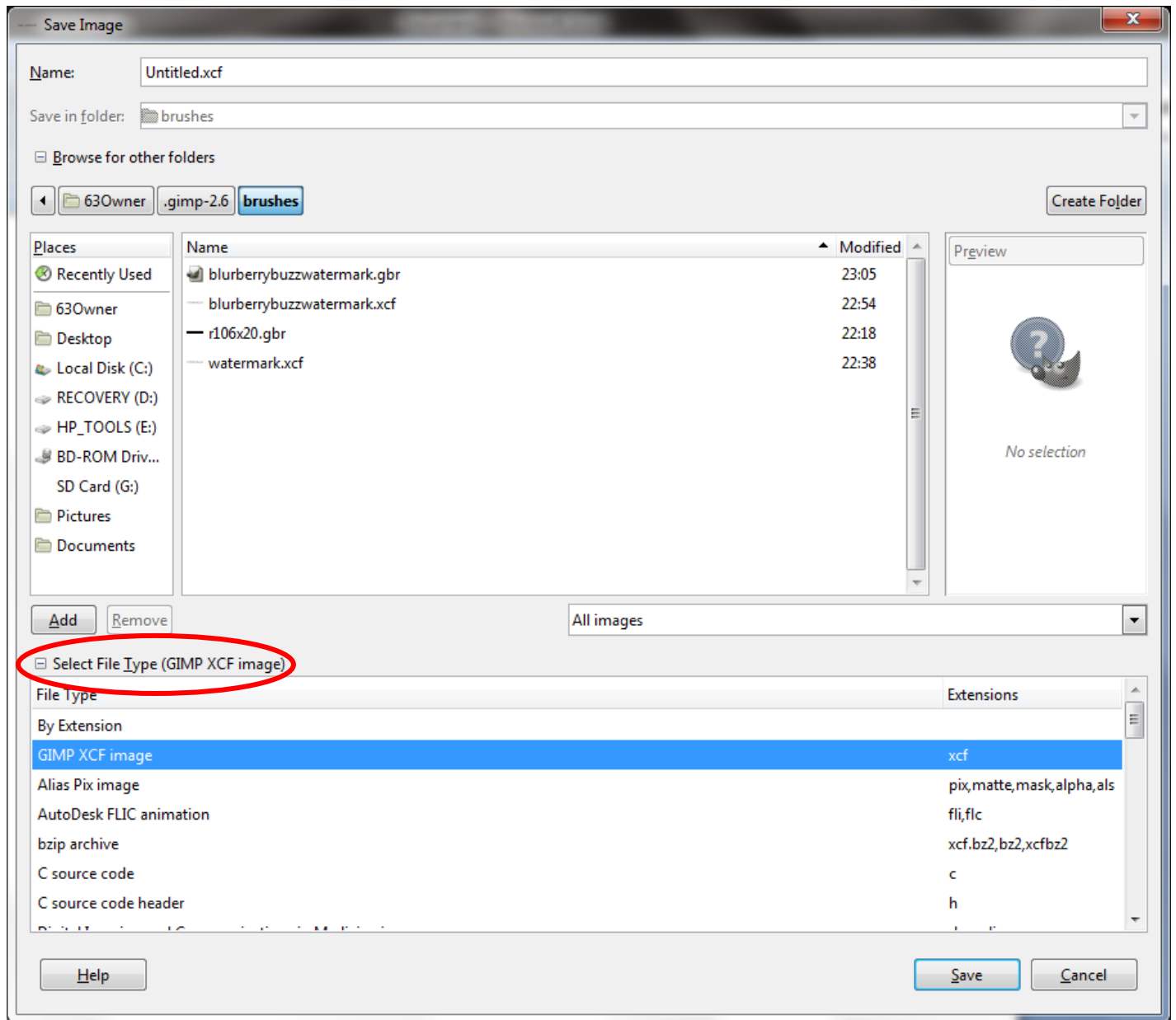


Save the file in Gimp under brushes as an .xcf file.

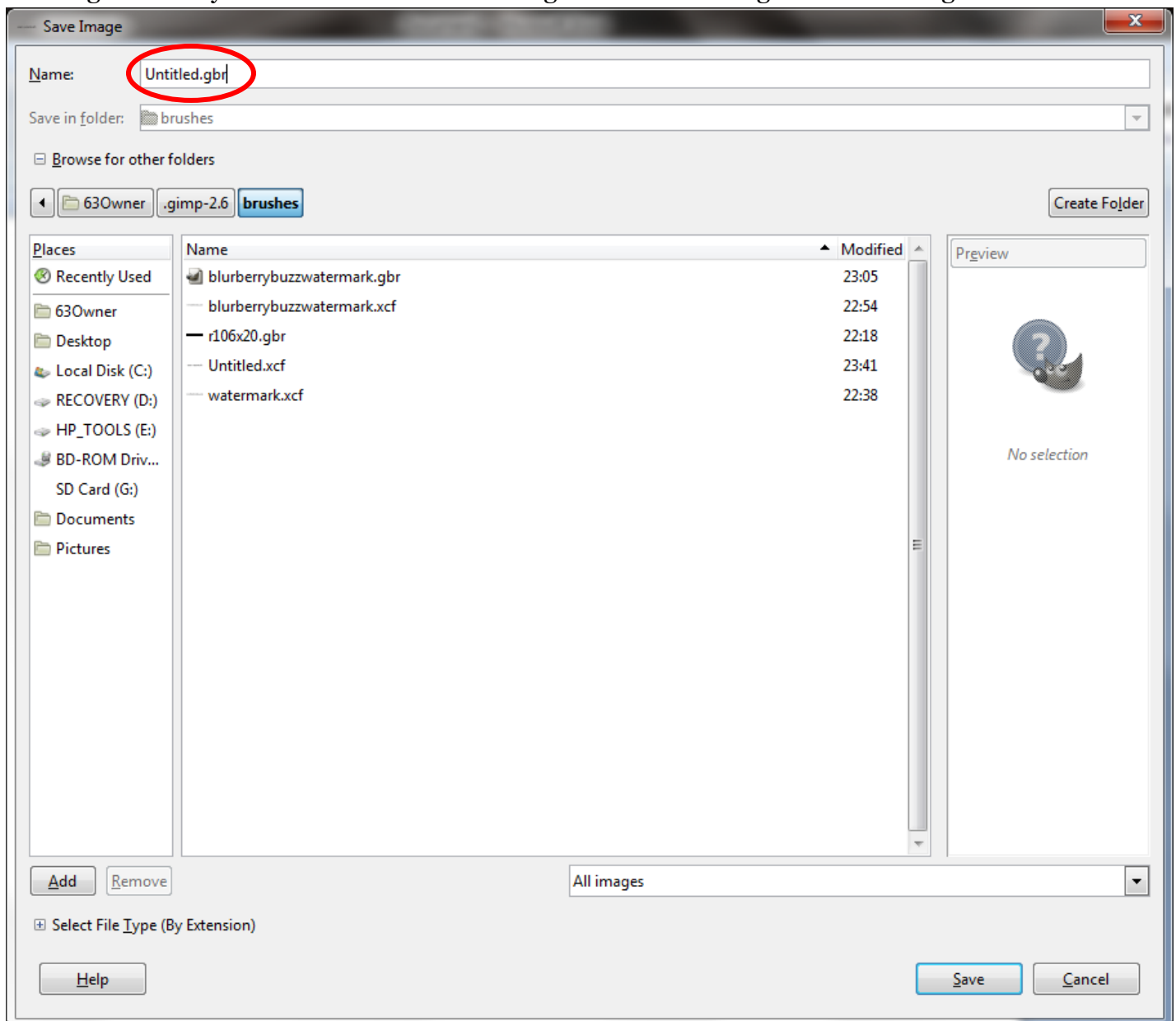
File, Save AS...go through your directories to gimp and brushes.



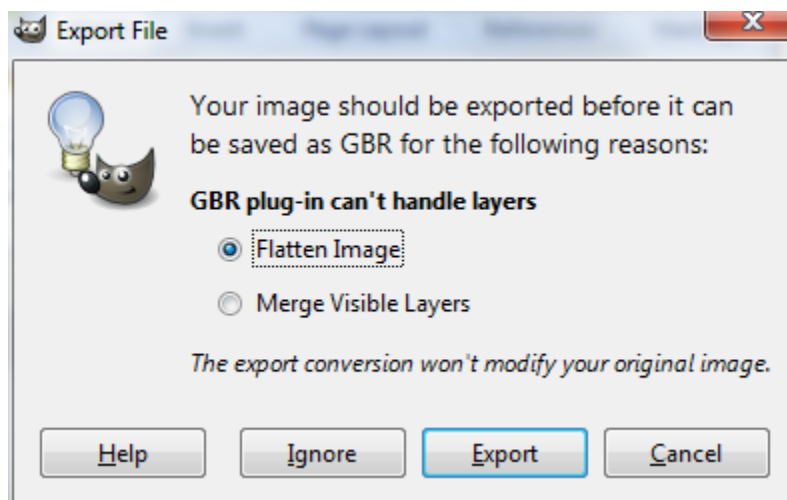
Click on the + Select File Type at the bottom left of the box and select “GIMP XCF image”. Name your file and save.



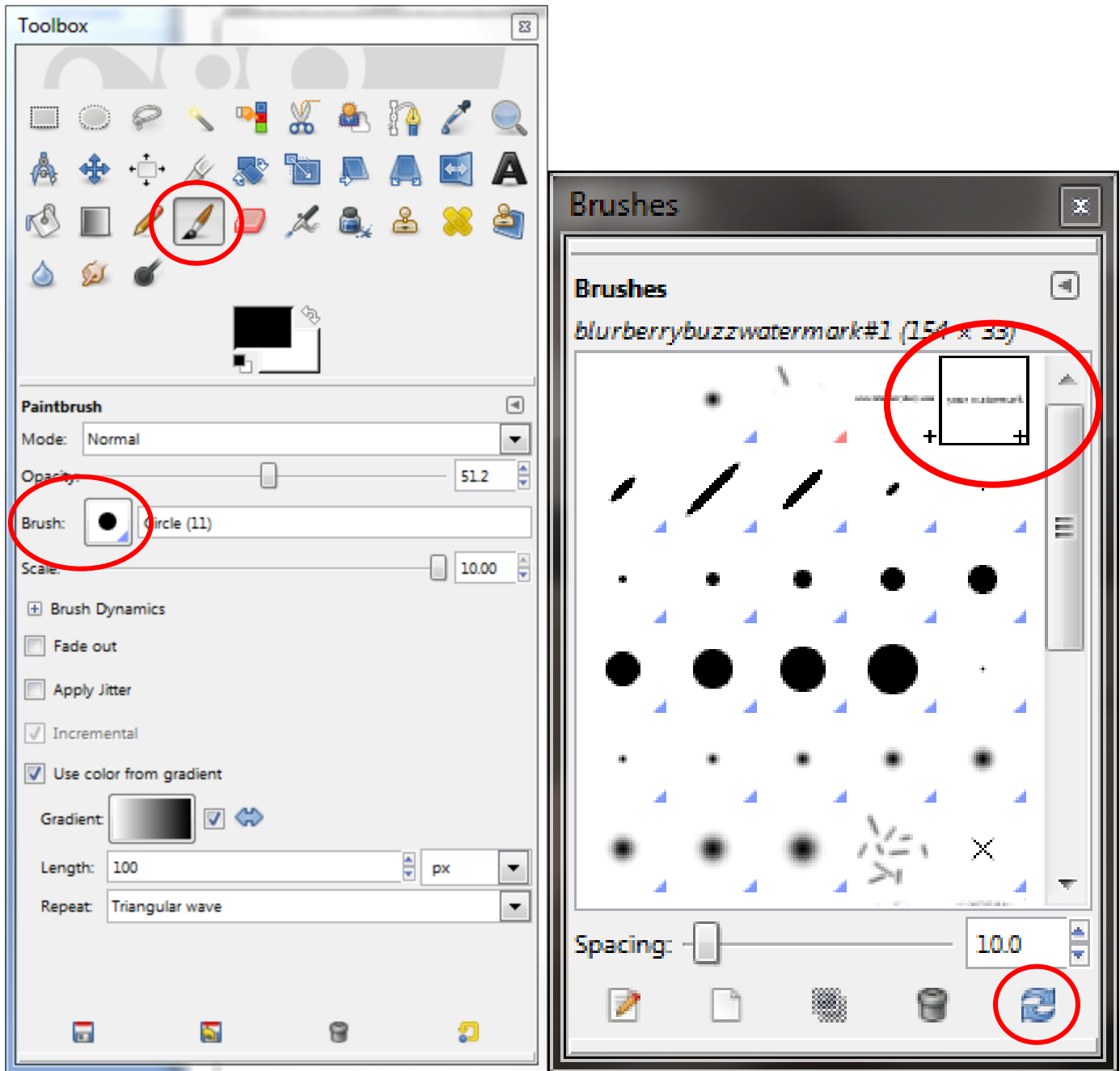
Then go back to your XCF file and Save As a .gbr file Just change the title to a .gbr and click Save.



You will then get this option. Flatten the image and export.

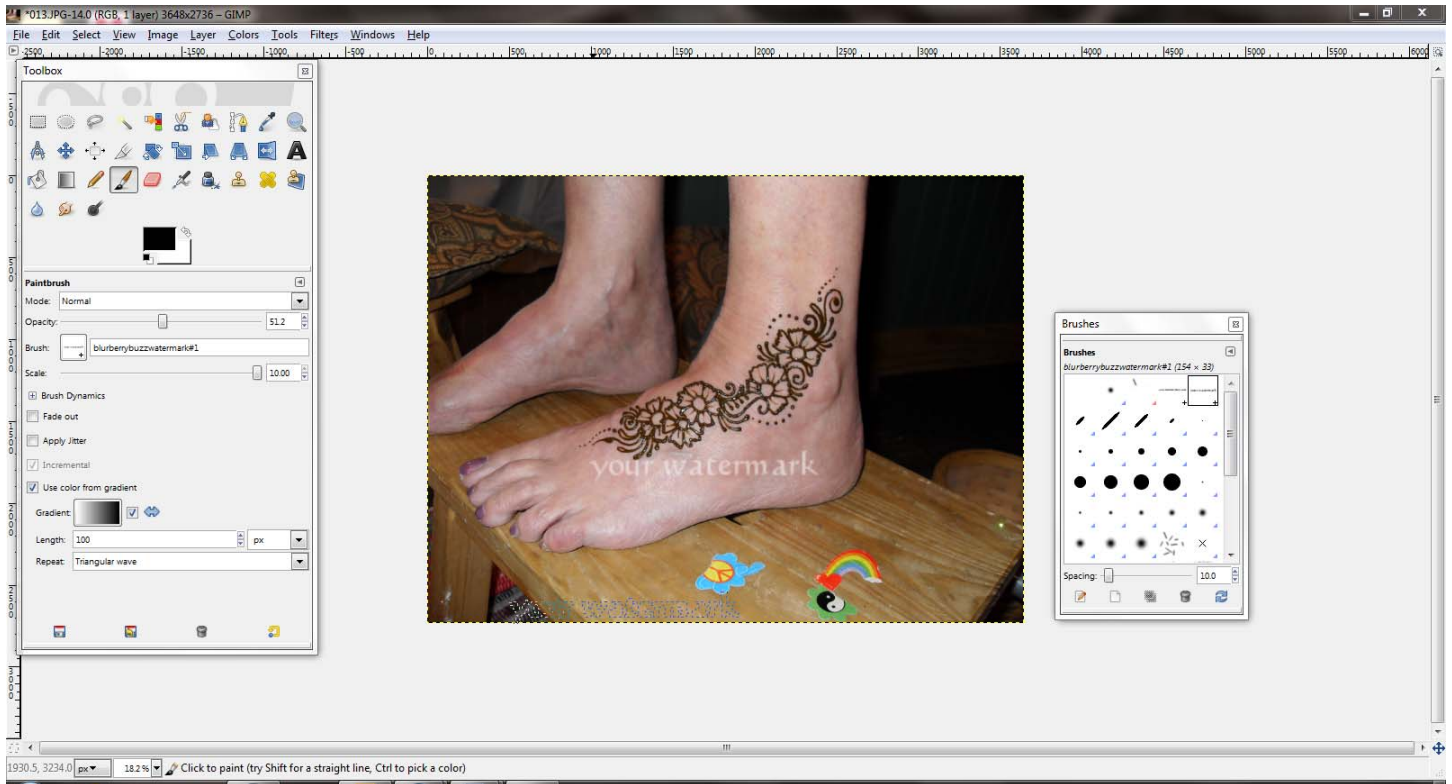


Then open the image you want to watermark and select the paint brush tool. Click on the brush in the lower half of the screen and this brushes box pops up.



Click on refresh (the two arrows in the lower right hand corner) and your custom brush/watermark appears!

Watermark away, playing with the size, color and opacity of the paint brush.



[www.hennapage.com](http://www.hennapage.com)

© 2010 Victoria Welch

Victoria Welch • Blurberrybuzz • [www.blurberrybuzz.com](http://www.blurberrybuzz.com)